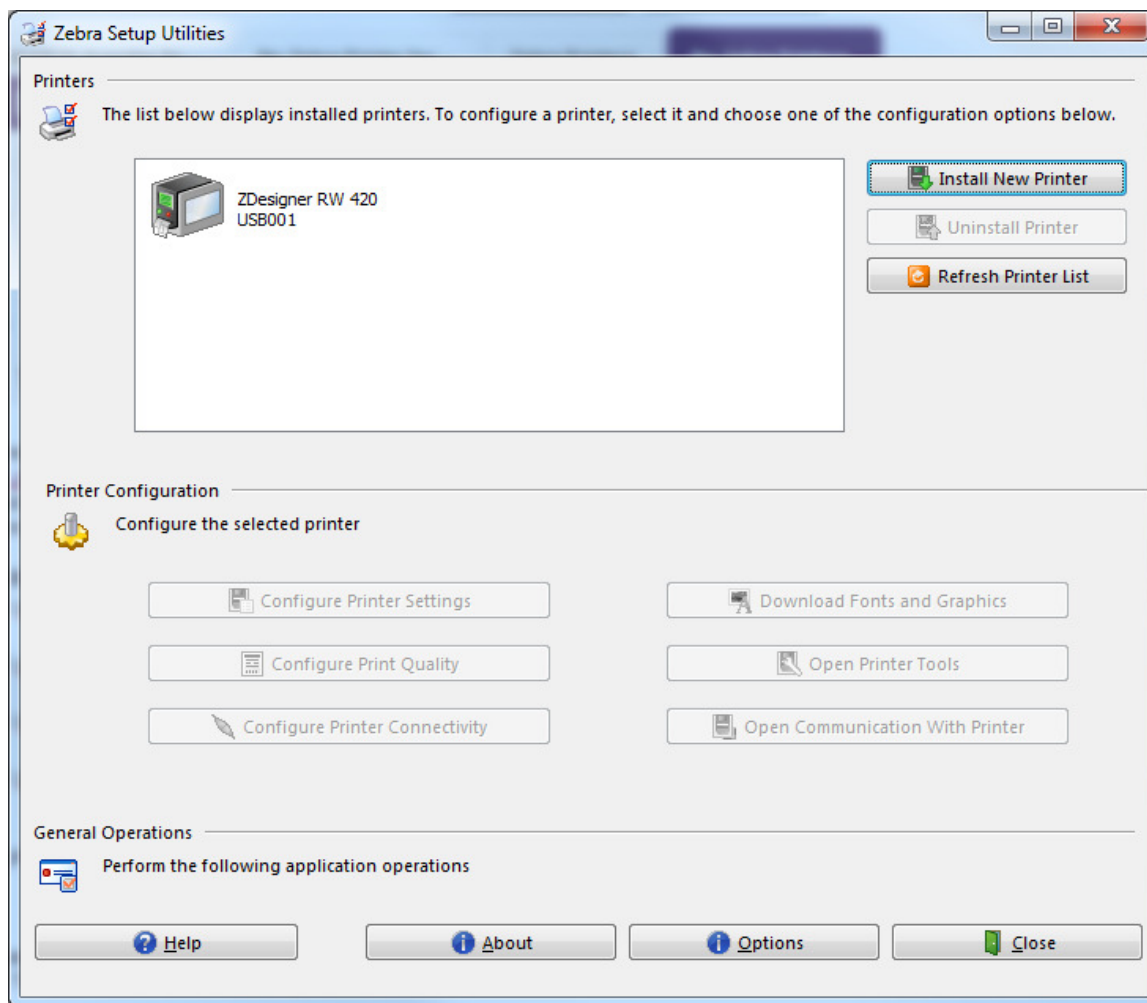


## Configuring Zebra printers using Zebra Setup Utilities:

If you don't already have Zebra Setup Utilities, download it and install from [www.zebra.com](http://www.zebra.com). Some steps do not need to be done if you are running FieldTicket.

1. Plug the USB cable into the PC USB port, and firmly into the printer's USB port. (IF YOU ARE configuring multiple printers, make sure you read the last step BEFORE unplugging the cable!)
2. Run Zebra Setup Utilities. If you have not installed a printer driver for your model of printer, you must do that first. Use the "Install New Printer" button. In the example below, you can see that an RW420 driver is installed.

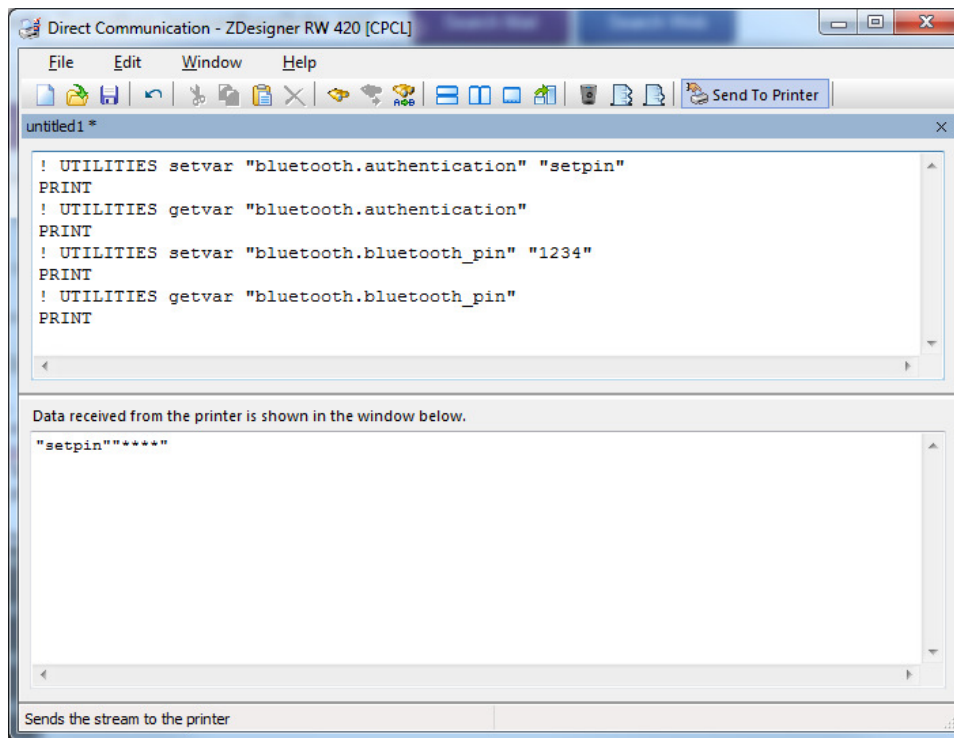


3. Click on the printer, and click "Open Communication With Printer" which opens a communication window to allow sending commands to the printer.

4. (Note: this step is not necessary with newer models and versions of Zebra printers as they will auto-connect using a shared PIN when you initiate a pair from the handheld device.) To set the Bluetooth pin (used for pairing with your handheld device), enter the following commands into the window. Note if your pin is not 1234, change it to the correct pin (should be a 4 numeric digits) in the setvar command:

```
! UTILITIES setvar "bluetooth.authentication" "setpin"  
PRINT  
! UTILITIES getvar "bluetooth.authentication"  
PRINT  
! UTILITIES setvar "bluetooth.bluetooth_pin" "1234"  
PRINT  
! UTILITIES getvar "bluetooth.bluetooth_pin"  
PRINT
```

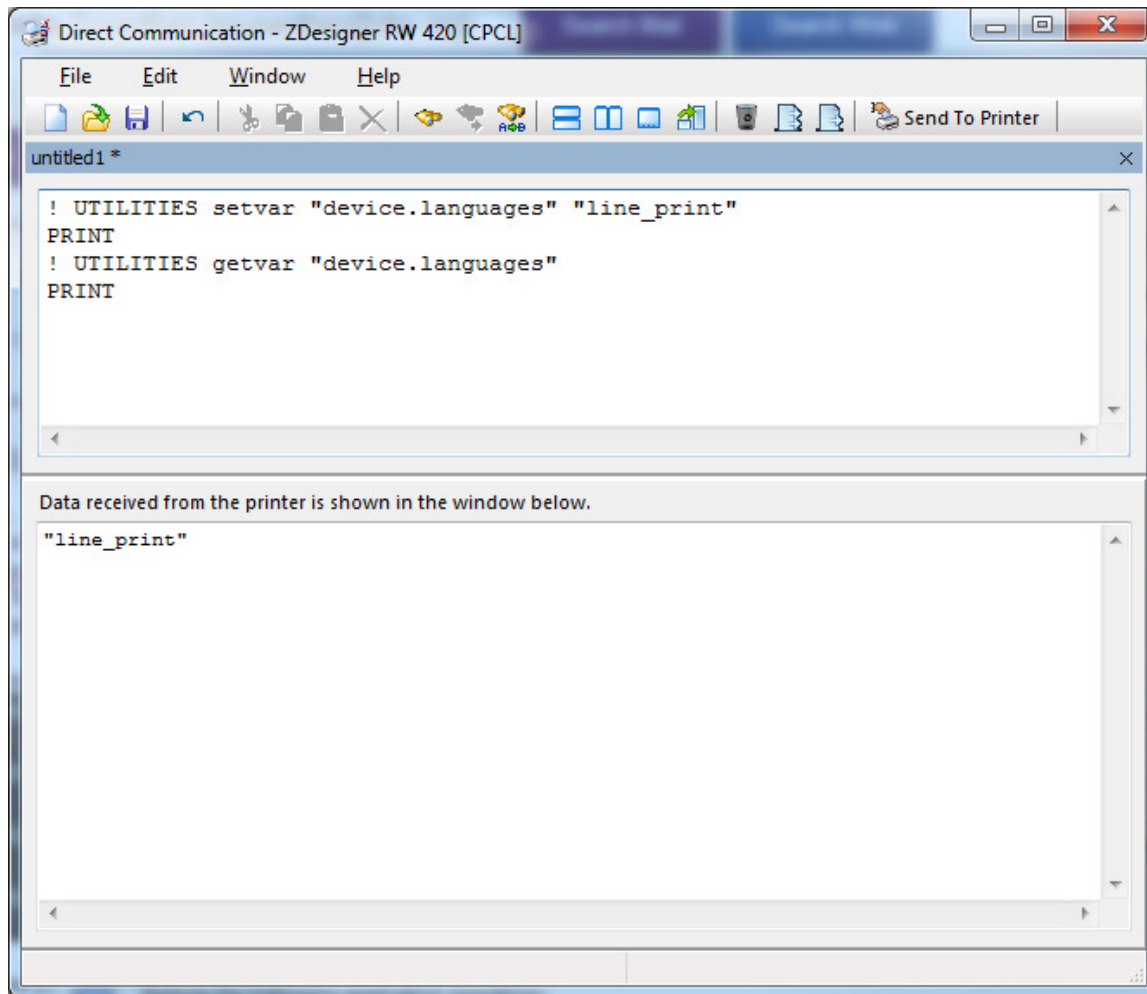
Below is how your screen should look after sending the commands to the printer:



The data received window should show "setpin"\*\*\*\*\*

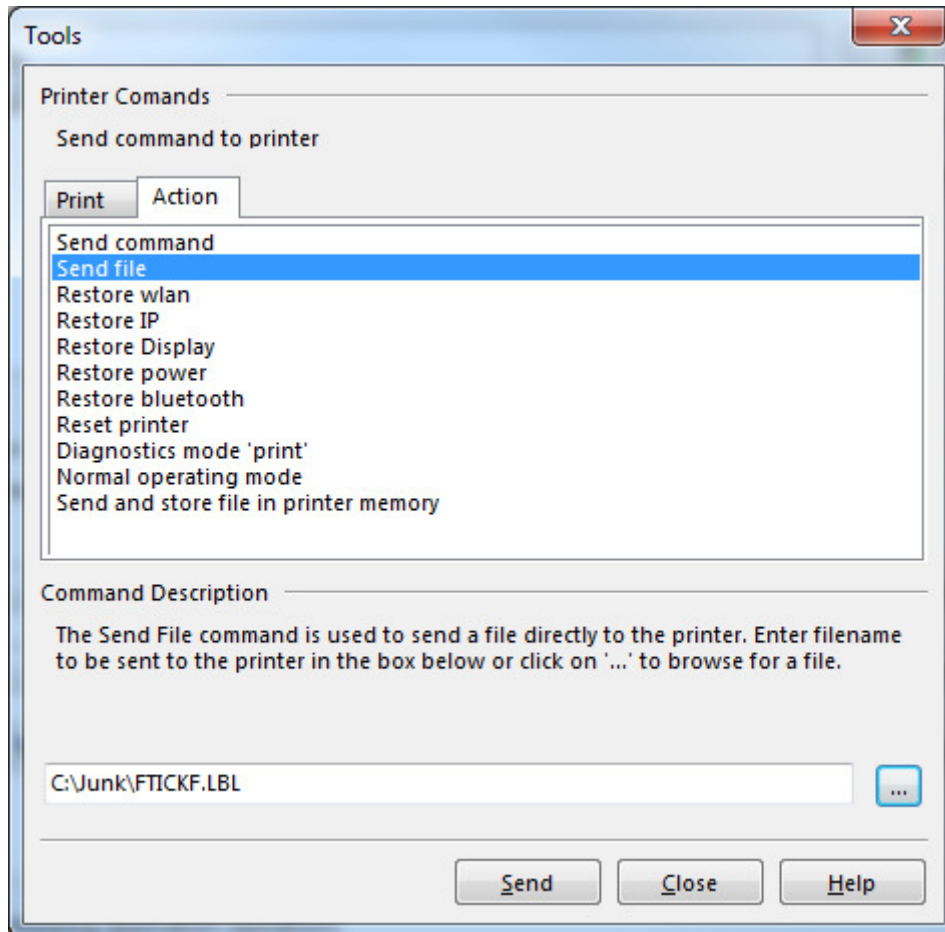
**5. (FieldPro only)** To set the printer language, enter the following commands into the window:

```
! UTILITIES setvar "device.languages" "line_print"  
PRINT  
! UTILITIES getvar "device.languages"  
PRINT
```



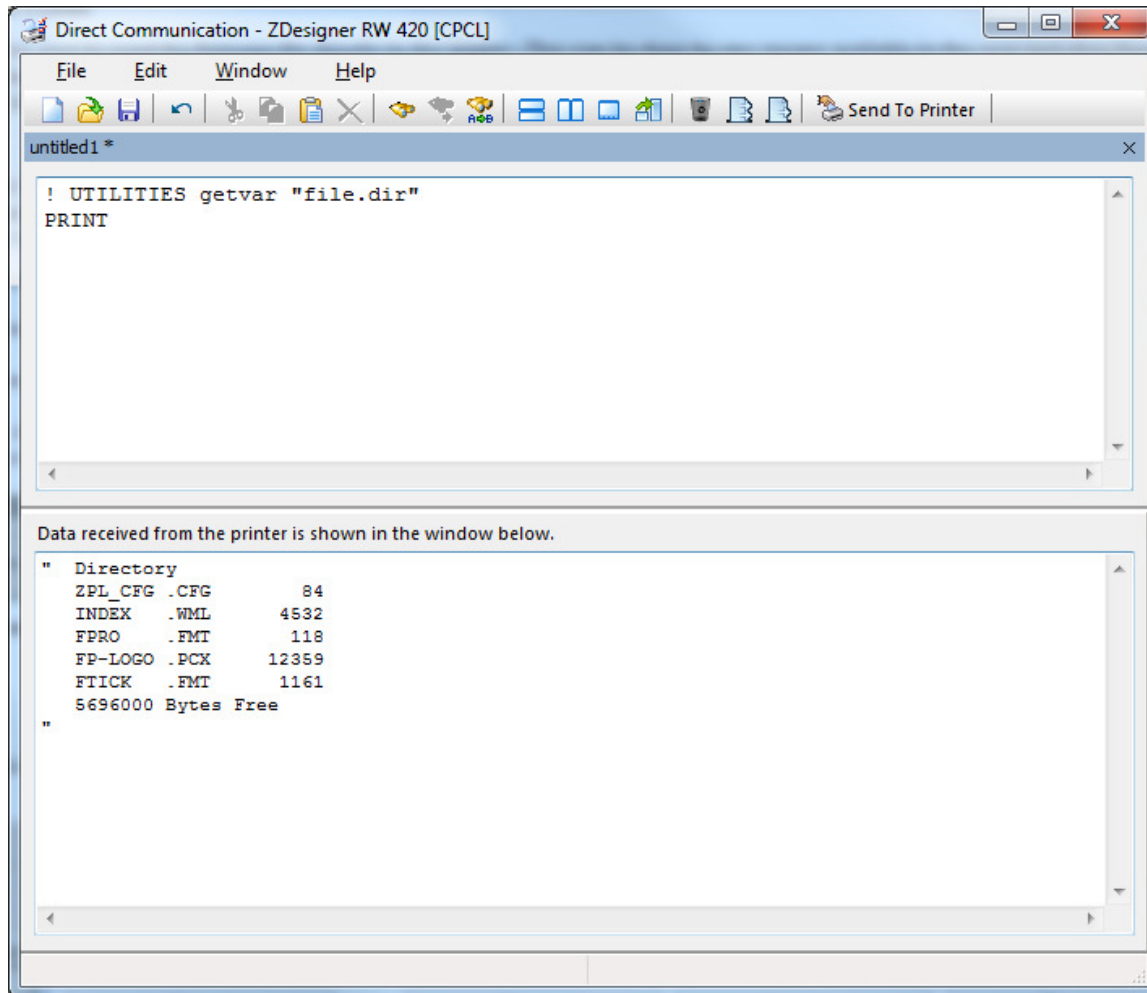
The data received window should show "line\_print"

6. To send your custom LBL file to the printer (the LBL file is essentially a template file that describes how lines and text should appear on the Ticket or Notice printout. It creates an FMT file on the printer), close the Direct Communication window, and click the “Open Printer Tools” button, and click on the Action tab. Click on the “Send file” item, and browse to the LBL file you want to send, and click the Send button. In the example below, we have selected the C:\Junk\FTICKF.LBL file to send.



7. You can verify that the FMT file was saved to the printer by closing the Tools window, and click “Open Communication With Printer”. Enter the following commands:

```
! UTILITIES getvar "file.dir"  
PRINT
```



Ensure that the required FMT file(s) are in the list.

For FieldPro, the FMT file will be called FPRO.FMT

For FieldTicket, the FMT file(s) will be called FTICK.FMT (for vehicle tickets) and FTICK2.FMT (for LNA tickets).

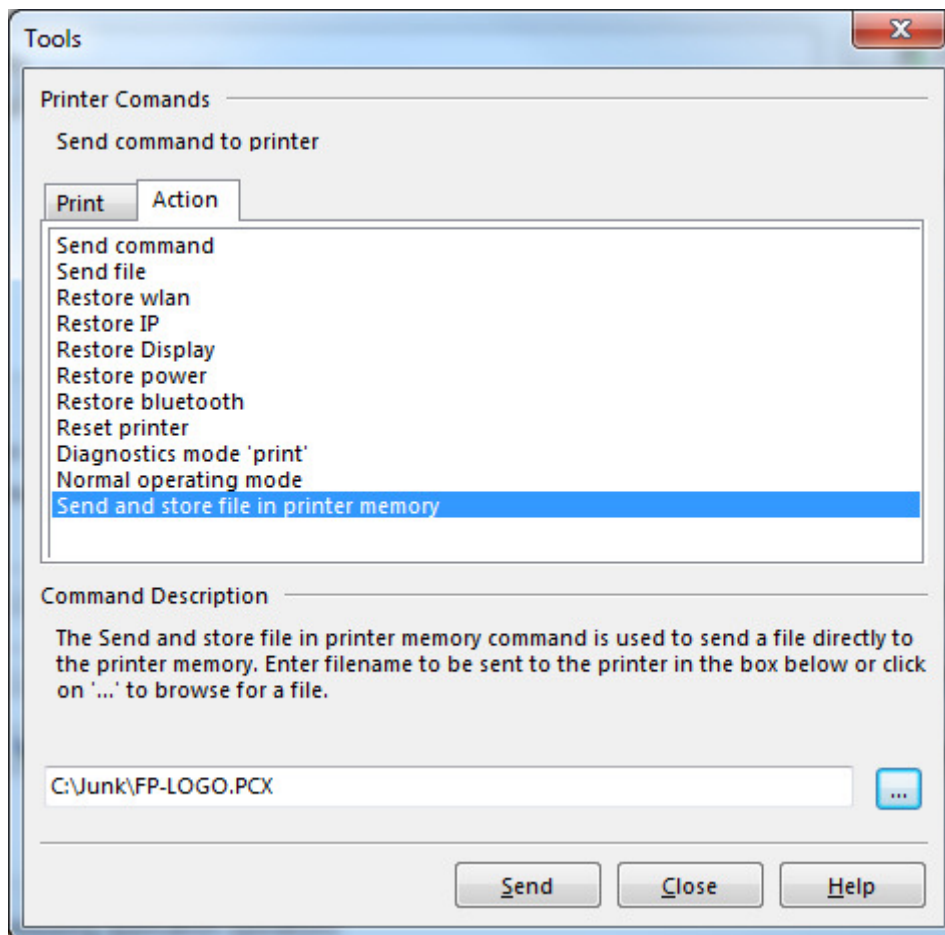
You will need the appropriate FMT file(s) loaded, depending on whether you are running FieldPro and/or FieldTicket, otherwise gibberish will print.

If needed, you can display the contents of a file by using the command:

```
! U1 do "file.type" "FTICK.FMT"
```

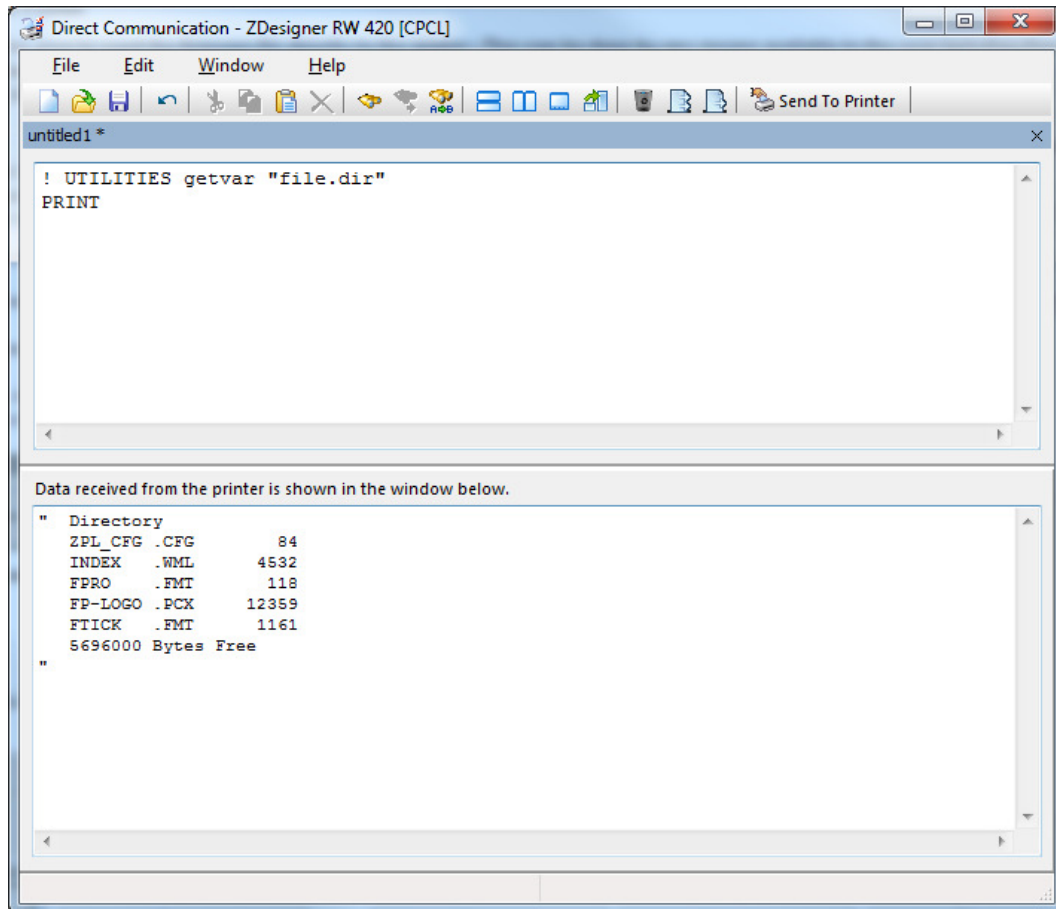
This will stream the contents of the file into the lower window.

**8. (FieldPro only)** FieldPro additionally requires a custom FP-LOGO.PCX file to exist on the printer. This file contains your custom Notice header with a logo and phone numbers, etc. This PCX file is something that Mpowered would have had you customize. To send your custom PCX file to the printer, close the Direct Communication window, and click the “Open Printer Tools” button, and click on the Action tab. Click on the “Send and store file in printer memory” item, and browse to the PCX file you want to send, and click the Send button. In the example below, we have selected the C:\Junk\FP-LOGO.PCX file to send.



**9. (FieldPro only)** You can verify that the PCX file was saved to the printer by closing the Tools window, and click “Open Communication With Printer”. Enter the following commands:

```
! UTILITIES getvar "file.dir"  
PRINT
```



Ensure that the FP-LOGO.PCX file is there.

**10.** Now you can pair with the printer from the handheld (using the PIN you chose in step 4), and then test printing a Ticket or Notice. See your handheld device manual for more details on Bluetooth pairing.

**11.** If you are configuring multiple printers, make sure these two steps in this order:

- Exit the Zebra Setup Utilities windows application.
- Unplug the cable from the printer you just configured above.

If you don't do the above two steps in that order, ZSU will not connect to the next printer, no matter what you do, and your only recourse will be to re-boot your computer in order to configure the next printer.